

PRODUCT ASSEMBLY GUIDE

Electric ottoman motor & base assembly



DESIGNED AND MANUFACTURED BY
SLEEPPEEZEE LTD
POOLEHETER

Sleeppeezee

ESTABLISHED 1924

www.sleeppeezee.com

LEAVE THE **REST** TO US

THANK YOU FOR CHOOSING SLEEPEEZEE

Thank you for choosing one of our premium electric ottoman beds. We hope that you will be delighted with your new purchase.

The electric ottoman you will sleep on draws upon 100 years of traditional craftsmanship and manufacturing innovation.

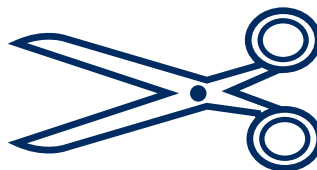
We are proud of our reputation for quality and design and you can be assured that every product we make is produced with care and to the highest standard.

Please take your time to follow these assembly guidelines. They are designed to help you get the most from your bed and ensure it functions correctly.

TOOLS YOU WILL NEED before you get started:



SOFT mallet

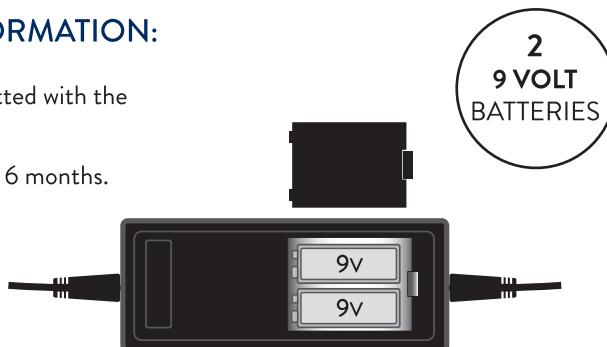


Sharp pointed scissors

POWER PACK INFORMATION:

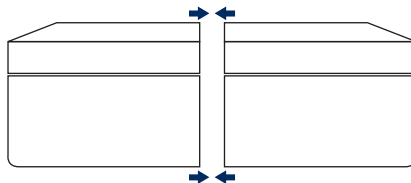
Ensure the power pack is fitted with the batteries provided.

Change the batteries every 6 months.



STEP 01

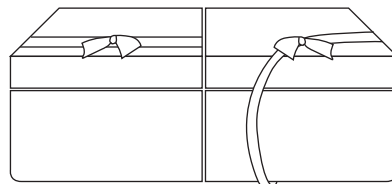
Remove all packaging and position both halves of the base the correct way up with the square corners together.



STEP 02

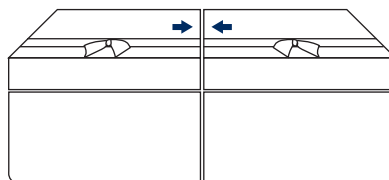
Loosen the strap on the right side of the ottoman **BUT DO NOT CUT THEM.**

Put these to the side.



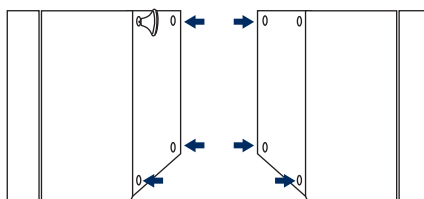
STEP 03

Lift the right lid and remove the glides and fixing kits.



STEP 04

Close the lid and resecure with the strap you had loosened off.

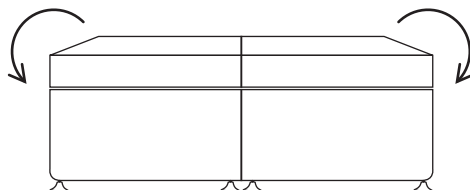


STEP 05

Turn both ottoman bases on their side and fit the glides using a soft mallet.



Once done, turn the bases back on to the glides.



STEP 06

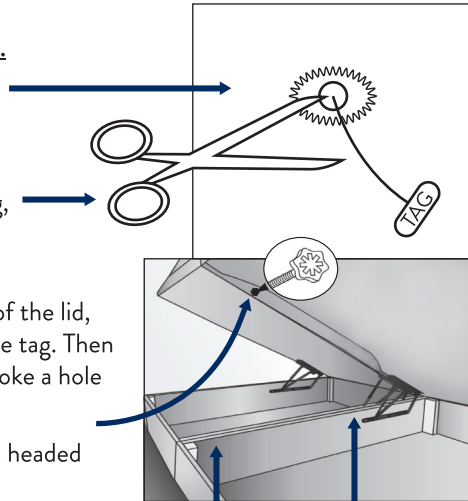
Remove the straps by pulling them over the front of the base, **BUT DO NOT CUT THEM.**

Lift the right lid. On the inside of the lid you will see a tag. This indicates the location of the bolt hole.

Use your finger to feel the hole around the tag, then use your scissors to cut the tag and carefully poke a hole through.

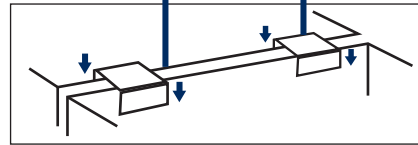
Lift the left lid. Locate the tag on the outside of the lid, then use your finger to feel the hole around the tag. Then use your scissors to cut the tag and carefully poke a hole through.

Once you have made the holes, use the plastic headed bolts to join the lids together.



STEP 07

Place the 'U'clips over the middle of the two bases - this finishes securing the bases together.



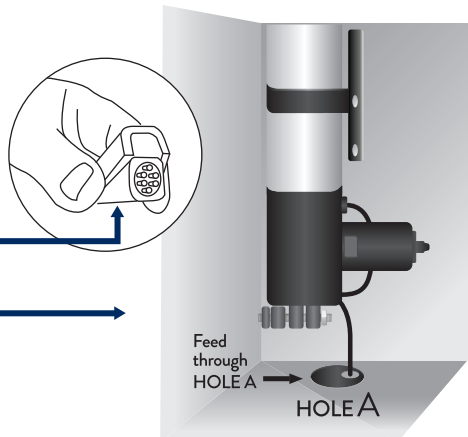
STEP 08

When facing the ottoman, the left-hand base contains an electric motor.

The electric motor has two loose cables.

For this step you need to find the plug which has a **multi pin plug head**.

Feed this through **hole A** underneath the motor.



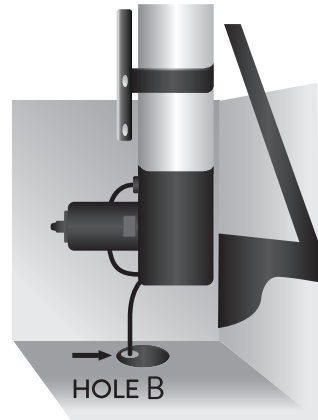
STEP 09

Continue to feed the cable through and bring it round the back of the ottoman and leave for the moment.

STEP 10

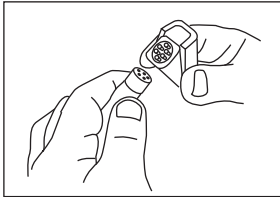
On the right side of the base, there is a cable coming out of the motor.

Feed this out of **hole B** and bring this round the back of the ottoman, meeting the multi pin plug.



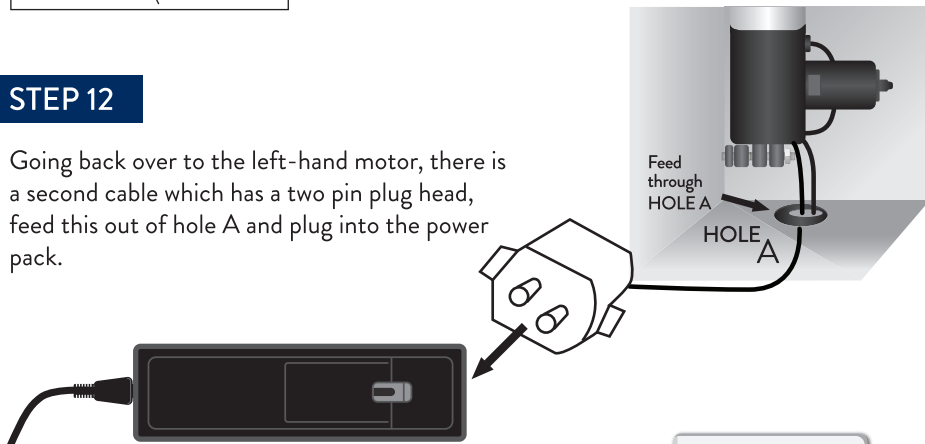
STEP 11

Plug the two plug heads together.



STEP 12

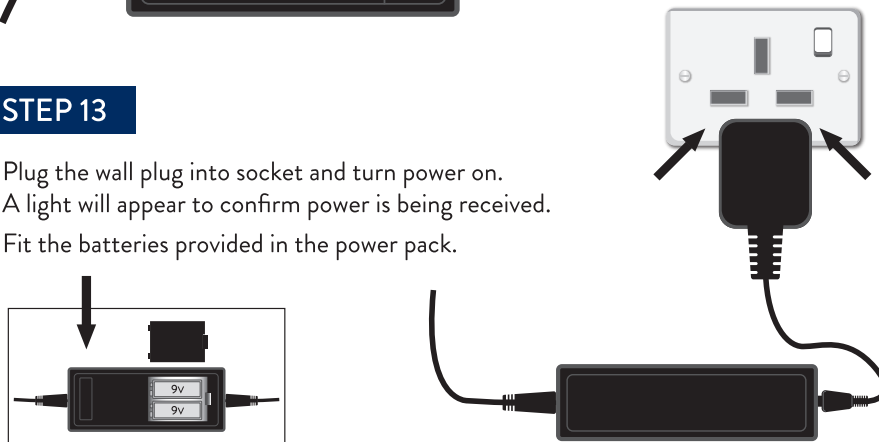
Going back over to the left-hand motor, there is a second cable which has a two pin plug head, feed this out of hole A and plug into the power pack.



STEP 13

Plug the wall plug into socket and turn power on. A light will appear to confirm power is being received.

Fit the batteries provided in the power pack.



STEP 14

LOWER BOTH LIDS MANUALLY by pushing down gently until closed.
Then place the mattress on the bases.

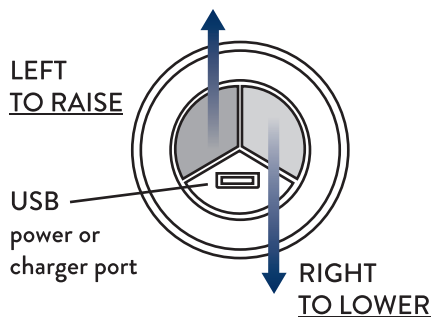
OPERATING INSTRUCTIONS

By using the control button on the left side of the ottoman base, the lid can now be raised and lowered by using the left or right buttons as shown.

The mattress must be on the base to lower with the control unit.

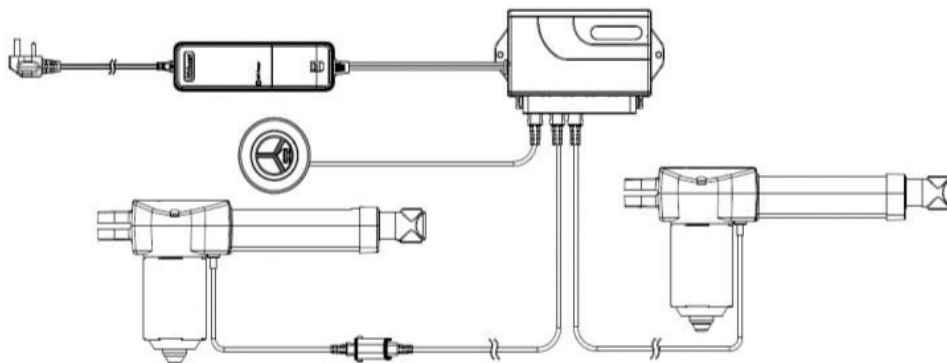
To **LOCK** the ottoman, press and hold both buttons for 3 seconds until you hear a 'beep'.
Make sure the ottoman is fully closed before locking.

To **UNLOCK** the ottoman, press both buttons for 3 seconds until you hear a 'beep',



WIRING DIAGRAM

The below wiring diagram illustrates how all the electronics fit together from start to finish.



IMPORTANT INFORMATION:

NEVER attempt to operate the lid manually when the ottoman is powered up as this can cause damage to the hydraulics.

Ensure the ottoman is fully closed before locking.

In the event of a power outage, the power pack can be used to lower the lid if open.

Ensure the power pack is fitted with the batteries provided. See page 1.

Change the batteries every 6 months.

When fitting the headboard, ensure no cables are squashed underneath the headboard.

If the lid is raising at an angle:

This would suggest excess weight has been added one side. To re-sync and level the bed, run the motors and lid to the very top until they stop running. The motors should now be re-paired and work synchronised.

If the lid will not fit:

1. Check that power is getting to the power supply, this will be indicated by a light.
2. Make sure power cable is plugged into the wall and power is on.
3. Check cables are still connected.
4. It is still possible to raise the lid manually, but it will be heavy two-man lift.

You should be able to remove the mattress and lift the lid. Check internal cabling into the control box.

SAFETY WARNING:

RISK OF ENTRAPMENT

- Open and close the bed using the correct hand placement as shown in these instructions and the labels on the bed frame.
- Keep hands and fingers clear of the side mechanism when closing.
- Ensure no other person is near the bed when opening or closing.
- Do not allow children to play with or operate the bed.

CONTACT US

- **PHONE**

01634 723557

- **EMAIL**

enquiries@sleepeeze.com

- **ONLINE**

www.sleepeeze.com

- **POST**

Sleepeeze
Knight Road
Rochester
Kent. ME2 2BP

Our dedication to helping preserve our environment and reduce our carbon emissions has resulted in us achieving a Carbon Neutral organisation status.



As part of our carbon offsetting initiative, we work with local schools in a tree planting programme, which allows us to share with young people the importance of sustainability and caring for our environment.

